

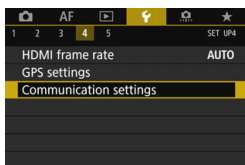
# Connecting with [Easy connection]

The camera and a smartphone can be directly connected via Wi-Fi. To establish connection, operations on the smartphone are required. For details, refer to the smartphone's instruction manual.

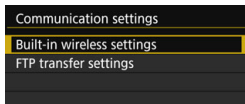
## Operation on the Smartphone-1

- 1 Install Camera Connect on the smartphone (p.W-18).

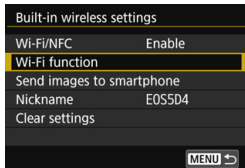
## Operation on the Camera-1



- 2 Select [Communication settings].
  - Under the [4] tab, select [Communication settings], then press < (SET) >.



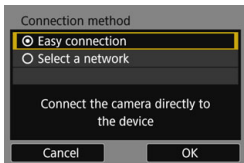
- 3 Select [Built-in wireless settings].



- 4 Select [Wi-Fi function].
  - Set [Wi-Fi/NFC] to [Enable], then select [Wi-Fi function] (p.W-12).
  - If a screen for setting a nickname (for identification) appears, register a nickname (p.W-8).



- 5 Select [☐] (Connect to smartphone).



## 6 Select [Easy connection].

- Select [OK] and press <SET> to go to the next screen.

## Operation on the Smartphone-2

### Smartphone's screen (sample)

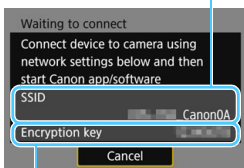


## 7 Operate the smartphone and connect it to the camera.

- Activate the smartphone's Wi-Fi function, then select the SSID (network name) displayed on the camera's LCD monitor.
- For the password, enter the encryption key displayed on the camera's LCD monitor.

### Camera's screen

SSID (network name)



Encryption key (password)

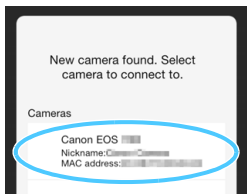


When connecting by selecting [Easy connection], “\_Canon0A” is displayed at the end of the SSID.



## 8 Start Camera Connect on the smartphone.

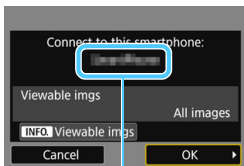
- When the [Waiting to connect] screen is displayed on the camera's LCD monitor, start Camera Connect on the smartphone.



## 9 Select the camera to connect to on the smartphone.

- Select and tap the camera to connect to from [Cameras] on Camera Connect.

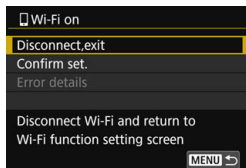
## Operation on the Camera-2



The device name set on  
Camera Connect

### 10 Connect to the camera.

- When a connection is established, the screen on the left will appear on the camera's LCD monitor.
- To specify viewable images, press the <INFO.> button. See step 7 on page W-40 to set them.
- Select [OK] and press <SET>. After a message is displayed, the [Wi-Fi on] screen will appear.



- ▶ The main window of Camera Connect will be displayed on the smartphone.
- To return to the menu, press the <MENU> button.

The settings for connecting to a smartphone are now complete.

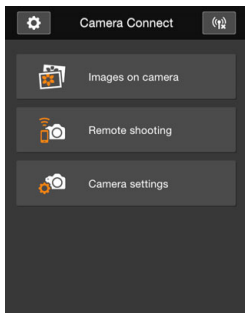


- You can check or change the device name on the setting screen of Camera Connect.
- While connected, the camera's auto power off does not function.

# Operating the Camera Using a Smartphone

You can use a smartphone with Camera Connect installed to view images stored in the camera or perform remote shooting, etc.

## Camera Connect Main Window



The main functions of Camera Connect are described below. Touch the screen to learn the operation procedures.

### [Images on camera]

- Images stored in the camera can be viewed.
- Images stored in the camera can be saved on a smartphone.
- Operations such as deletion can be performed on images stored in the camera.

### [Remote shooting]

- The camera's Live View image can be viewed using a smartphone.
- You can shoot using remote operation.

### [Camera settings]

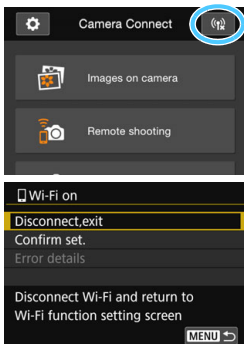
- Camera settings can be changed.

### ⚙️ (Settings button)

- Use this button to access various settings for Camera Connect.

## Terminating the Connection

To terminate the connection, perform either of the following operations.



**On the smartphone's Camera Connect screen, tap [ⓘ].**

**On the camera's [Wi-Fi on] screen, select [Disconnect,exit].**

- If the [Wi-Fi on] screen is not displayed, select the [4] tab → [Communication settings] → [Built-in wireless settings] → [Wi-Fi function].
- Select [Disconnect,exit], then select [OK] on the confirmation dialog to terminate the connection.

- When the wireless connection is terminated while recording a movie with remote shooting, the camera responds as follows:
  - When the Live View shooting/Movie shooting switch is set to <📹>, movie shooting continues.
  - When the Live View shooting/Movie shooting switch is set to <📷>, movie shooting stops.
- When the Live View shooting/Movie shooting switch is set to <📷> and the movie mode is set by operating Camera Connect, you cannot shoot by operating the camera.
- While connected, certain menu items are unavailable.
- In remote shooting, the AF speed may become slower.
- Depending on the connection status, image display or shutter release may be delayed.
- When saving images to a smartphone, you cannot take a picture even if you press the camera's shutter button. Also, the camera's LCD monitor may turn off.
- Even if MOV-format movies are displayed in the list, they cannot be saved to a smartphone.

- The wireless connection will stop if you set the camera's power to <OFF> or open the card slot cover or battery compartment cover.
- When saving RAW images to a smartphone, they are saved as JPEG images.
- While connected, the camera's auto power off does not function.
- While connected, disabling the smartphone's power saving function is recommended.